



**Roca**

# Maiolica Floor

# Maiolica Floor

Our Maiolica Floor collection will create a smooth atmosphere, bringing a fresh feel to any space through its soft tones. This series comes in an 8"x8" format and complements the Maiolica handmade wall tile collection.



Maiolica Floor Coto, Coto Pattern & Tender Gray Pattern 8"x8"

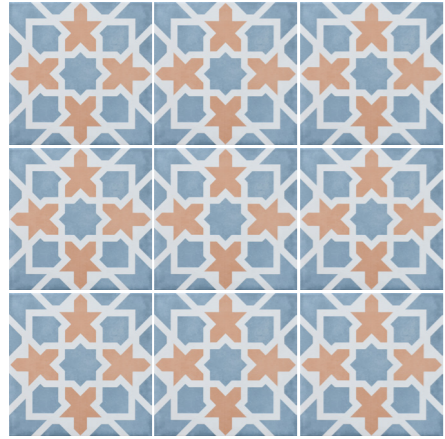
Gres Stoneware

  8"x8"

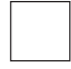
# Maiolica Floor

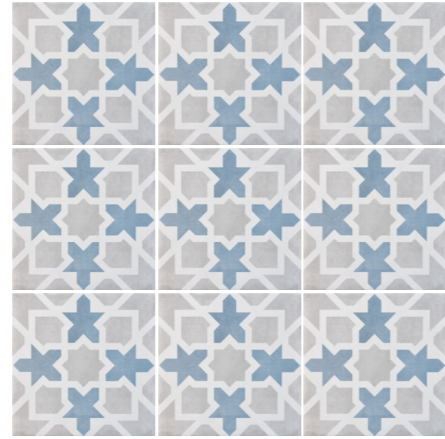
Gres Stoneware

8.2 mm |  | 8"x8" 20x20 cm




**Coto Pattern**

  
8"x8"  
MAIDF295-88




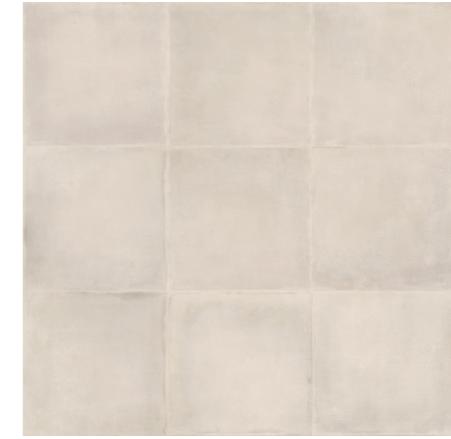
**Tender Gray Pattern**

  
8"x8"  
MAIDF261-88

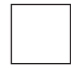


**White**

  
8"x8"  
MAIF281-88

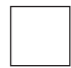


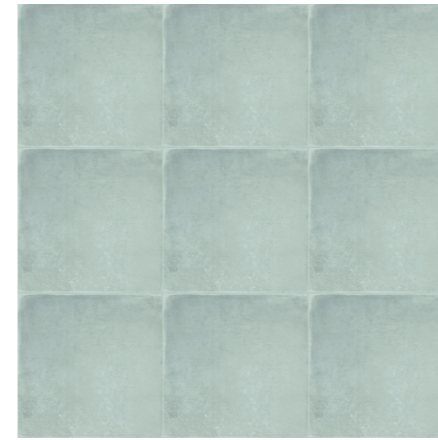
**Biscuit**

  
8"x8"  
MAIF274-88




**Coto**

  
8"x8"  
MAIF295-88

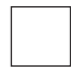


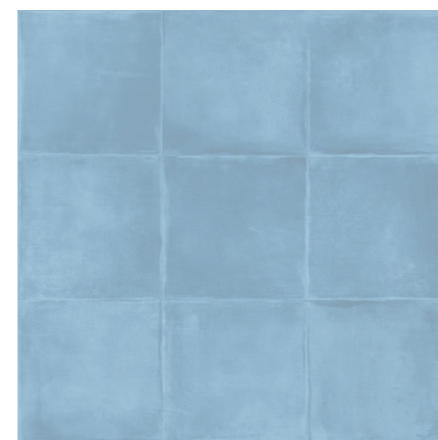
**Aqua**

  
8"x8"  
MAIF228-88




**Tender Gray**

  
8"x8"  
MAIF261-88




**Blue Steel**

  
8"x8"  
MAIF241-88



**Taupe**

  
8"x8"  
MAIF289-88

# Maiolica Floor

Gres Stoneware

## Technical Specifications

CHARACTERISTICS	STANDARD	DECLARED ASTM
Water Absorption	C373	>3%
Break Strength	C648	Min. 250
Scratch Hardness	MOH's Scale	4
Chemical Resistance	C650	Unaffected
Frost Resistance	C1026	Resistant
Group	See FAQ's	3
Deep Abrasion - Unglazed Tiles	C1243	-
PEI - Glazed Tiles***	C1027	2
Minimum Bond Strength (PSI)	C482	165
Dynamic Coefficient of Friction (DCOF)	A137.1	>=0.42
Shade and Texture Rating	CTDA "V"	V2
Facial Dimensions	C499	Pass
Range of Thickness	C499	Pass
Warpage	C485	Pass
Wedging	C502	Pass

## Packaging Info

Size	SF per carton	PC per carton
8"x8"	12.70	30