



Roca

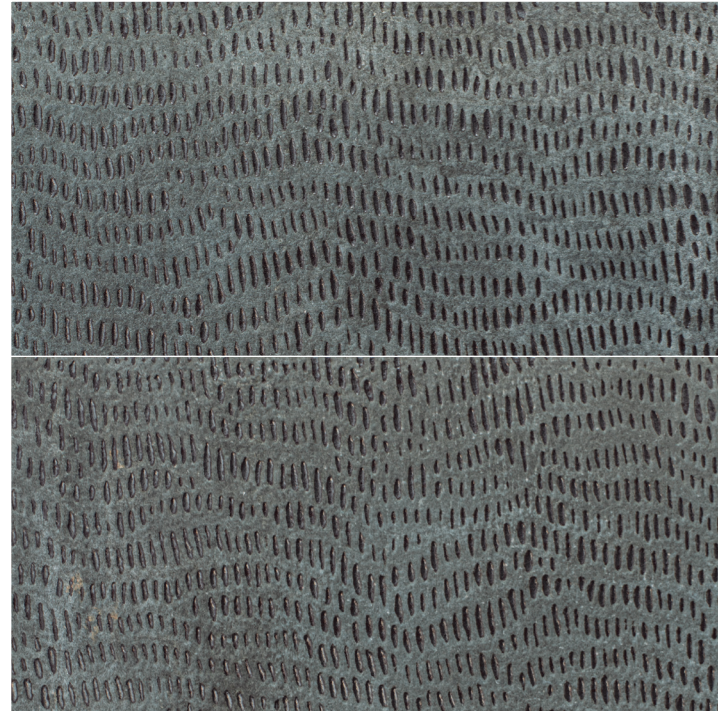
Vulcano

Vulcano


Matte & Glazed Porcelain


8.5
 mm

12"x24" R
 30x60cm



Carve


12"x24" R
 FK4025738

Technical Specifications

CHARACTERISTICS	STANDARD	DECLARED ASTM
Water Absorption	ISO-10545/3	<=0.5
Break Strength	ISO-10545/4	335
Scratch Hardness	EN-101	4
Chemical Resistance	ISO-10545/13	Unaffected
Frost Resistance	ISO-10545/12	Resistant
Group	ISO-10545/7	3
Dynamic Coefficient of Friction (DCOF)	A137.1	<=0.42
PEI	C1027	3
Shade and Texture Rating	CTDA "V"	V3
Facial Dimensions	ISO-10545/2	Pass
Range of Thickness	ISO-10545/2	Pass
Warpage	ISO-10545/2	Pass
Wedging	ISO-10545/2	Pass

Packaging Info

Size	SF per carton	PC per carton
12"x24" R	19.38	10