



**Roca**

**Natur**



Natur Light Gray



Natur Black



Natur Dark Gray

8.7 mm |  | **12"x36"**  
30x90 cm



## Suite White

---



12"x36"  
ARKLK04-1236



## White

---



12"x36"  
ARKLK01-1236



## Suite Beige

---



12"x36"  
ARKLK05-1236

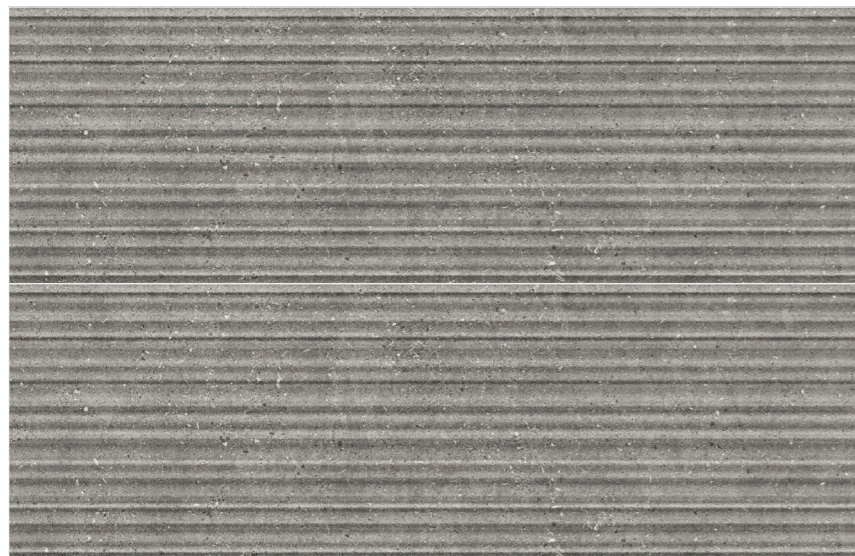


## Beige

---



12"x36"  
ARKLK02-1236

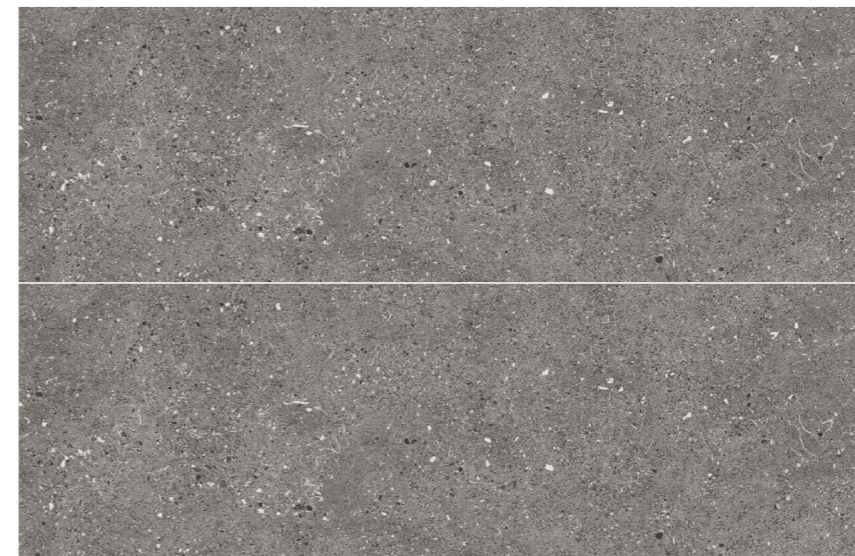


## Suite Light Gray

---



12"x36"  
ARKLK06-1236



## Light Gray

---



12"x36"  
ARKLK03-1236

# Natur

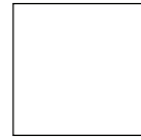
Porcelain Stoneware



**36"x36"** 90x90 cm   **24"x48"** 60x120 cm   **24"x24"** 60x60 cm   **12"x24"** 30x60 cm



## White



**36"x36"**  
ARKLK01-36



**24"x48"**  
ARKLK01-2448



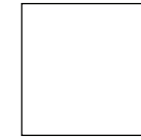
**24"x24"**  
ARKLK01-24



**12"x24"**  
ARKLK01-1224



## Snow



**36"x36"**  
ARKLK05-36



**24"x48"**  
ARKLK05-2448



**24"x24"**  
ARKLK05-24



**12"x24"**  
ARKLK05-1224



## Beige



**36"x36"**  
ARKLK02-36



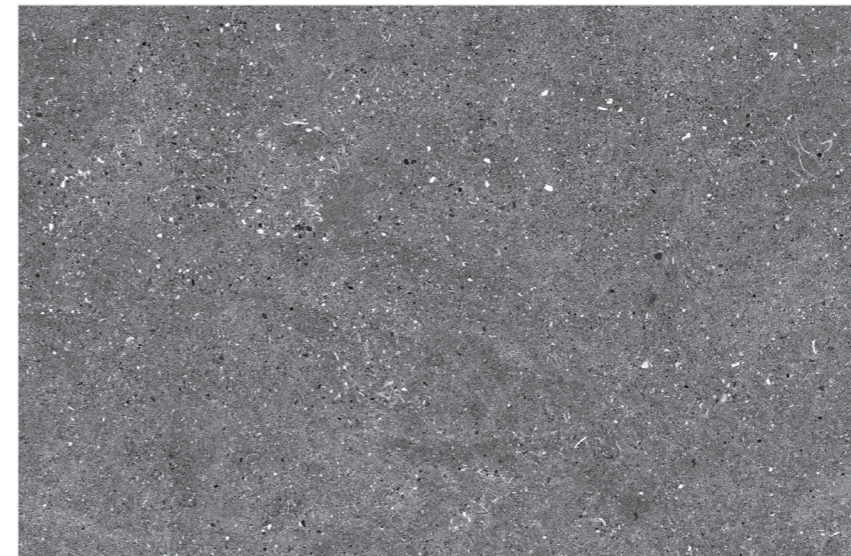
**24"x48"**  
ARKLK02-2448



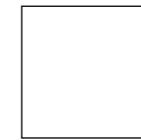
**24"x24"**  
ARKLK02-24



**12"x24"**  
ARKLK02-1224



## Dark Gray



**36"x36"**  
ARKLK06-36



**24"x48"**  
ARKLK06-2448



**24"x24"**  
ARKLK06-24



**12"x24"**  
ARKLK06-1224



## Light Gray



**36"x36"**  
ARKLK04-36



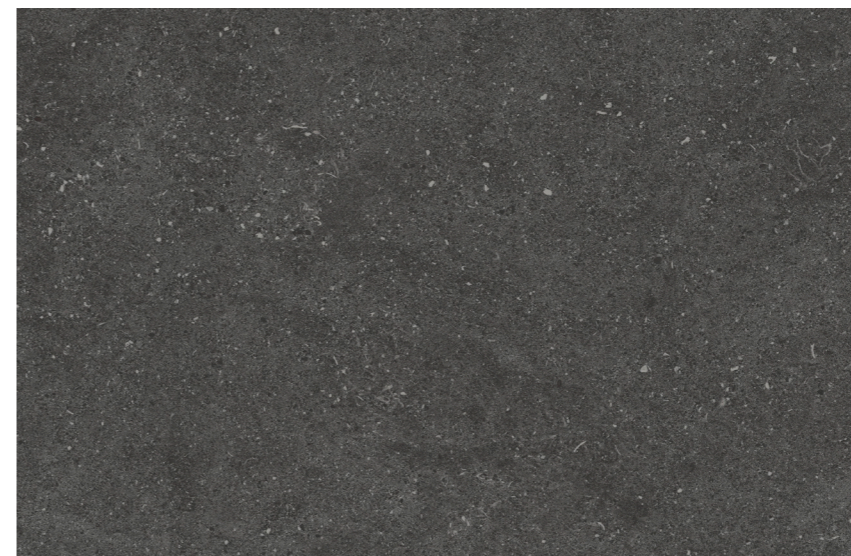
**24"x48"**  
ARKLK04-2448



**24"x24"**  
ARKLK04-24



**12"x24"**  
ARKLK04-1224



## Black



**36"x36"**  
ARKLK03-36



**24"x48"**  
ARKLK03-2448



**24"x24"**  
ARKLK03-24



**12"x24"**  
ARKLK03-1224

### Technical Specifications (Wall)

CHARACTERISTICS	STANDARD	DECLARED ASTM
Water Absorption	ISO-10545/3	>10%
Break Strength	ISO-10545/4	135
Scratch Hardness	EN-101	-
Chemical Resistance	ISO-10545/13	Unaffected
Frost Resistance	ISO-10545/12	Resistant
Group	ISO-10545/7	N/A
PEI	C1027	-
Minimum Bond Strength (PSI)	C482	-
Dynamic Coefficient of Friction (DCOF)	A137.1	-
Shade and Texture Rating	CTDA	V2
Facial Dimensions	ISO-10545/2	Pass
Range of Thickness	ISO-10545/2	Pass
Warping	ISO-10545/2	Pass
Wedging	ISO-10545/2	Pass

### Technical Specifications (Floor)

CHARACTERISTICS	STANDARD	DECLARED ASTM
Water Absorption	ISO-10545/3	<=0.5%
Break Strength	ISO-10545/4	290
Scratch Hardness	EN-101	9
Chemical Resistance	ISO-10545/13	Unaffected
Frost Resistance	ISO-10545/12	Resistant
Group	ISO-10545/7	3
PEI	C1027	3
Minimum Bond Strength (PSI)	C482	165
Dynamic Coefficient of Friction (DCOF)	A137.1	>=0.42
Shade and Texture Rating	CTDA	V2
Facial Dimensions	ISO-10545/2	Pass
Range of Thickness	ISO-10545/2	Pass
Warping	ISO-10545/2	Pass
Wedging	ISO-10545/2	Pass

### Packaging Info

Size	SF per carton	PC per carton
12"x36"	14.53	5

### Packaging Info

Size	SF per carton	PC per carton
12"x24"	11.62	6
24"x24"	11.62	3
24"x48"	15.49	2
36"x36"	17.43	2