



**Roca**

**Liverpool**

# Liverpool

The soft texture and cool tones offered in this porcelain cement-look series, create a contemporary environment in any space through a variety of formats and finishes.



Liverpool Blanco 24"x48" R UP

**Glazed & Polished Porcelain**

24"x48" R - 24"x24" R - 12"x24"R



Liverpool Cinza 24"x24" R



Liverpool Blanco 12"x24" R UP & 24"x48" R UP

# Liverpool

Glazed & Polished Porcelain

7-10  
mm



slim  
Recto™

24"x48" R  
60x120 cm

24"x24" R  
60x60 cm

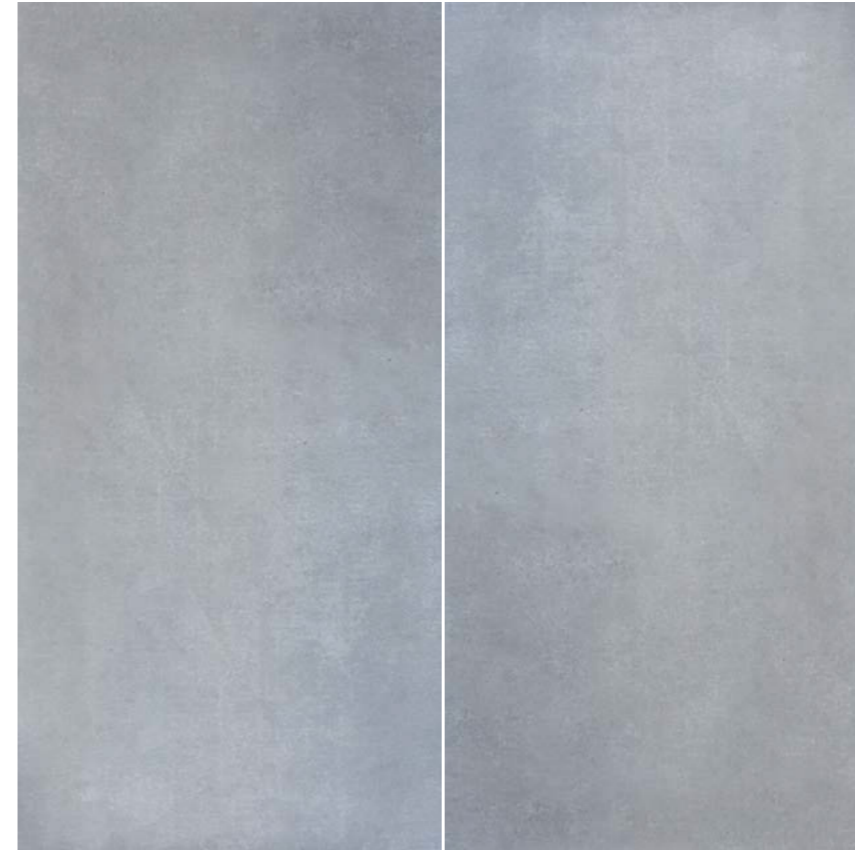
12"x24" R  
30x60 cm



## Blanco



24"x48" R PO



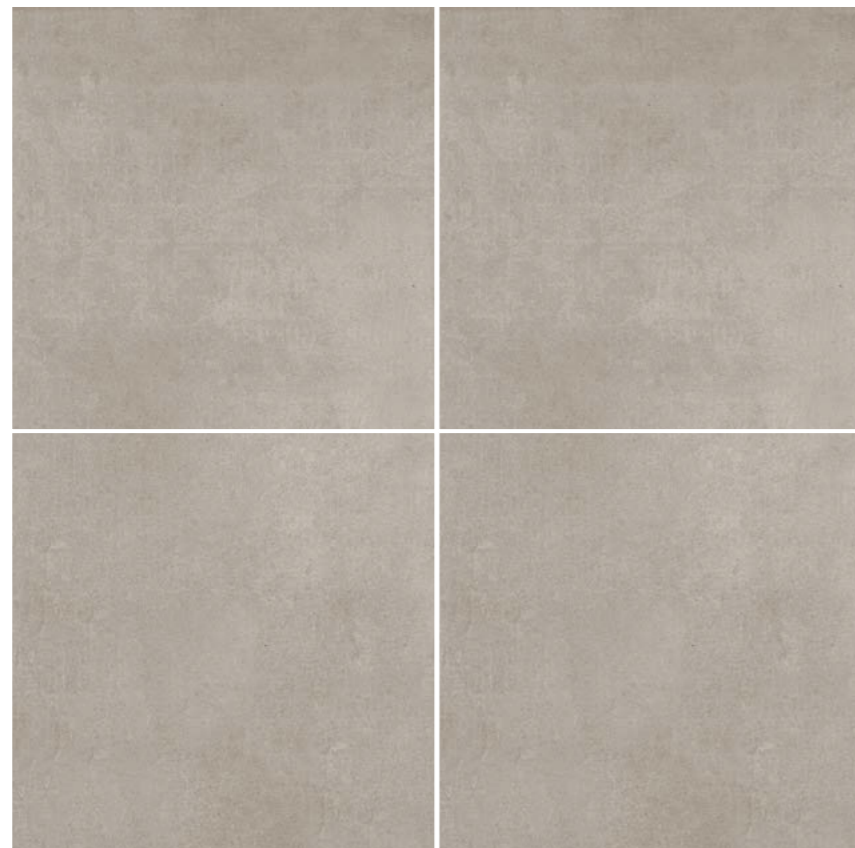
## Cinza



24"x48" R PO



12"x24" R PO



## Gris



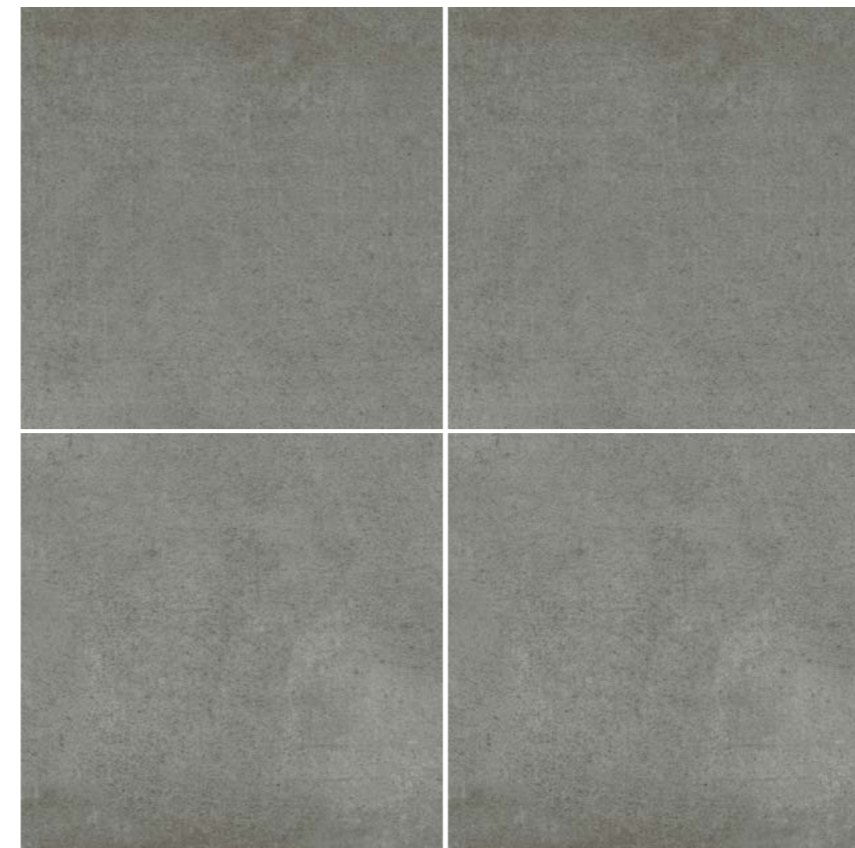
24"x24" R UP



24"x24" R PO



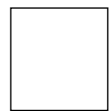
12"x24" R PO



## Grafito



24"x24" R UP



24"x24" R PO



12"x24" R UP



12"x24" R PO

# Liverpool

Glazed & Polished Porcelain

## Technical Specifications

CHARACTERISTICS	STANDARD	DECLARED ASTM	
		Polished	Unpolished
Water Absorption	C373	<=0.5%	<=0.5%*
Break Strength	C648	Min 335	Min 335
Scratch Hardness	MOH's Scale	3	5
Chemical Resistance	C650	Unaffected	Unaffected
Frost Resistance	C1026	Resistant	Resistant
Group	See FAQ's	3	4
PEI Glazed Tiles	C1027	3	-
Minimum Bond Strength (PSI)	C482	165	165
Dynamic Coefficient of Friction (DCOF)	A137.1	<=0.40	>=0.42
Shade and Texture Rating	CTDA "V"	V3	V3
Facial Dimensions	C499	Pass	Pass
Range of Thickness	C499	Pass	Pass
Warpage	C485	Pass	Pass
Wedging	C502	Pass	Pass

## Packaging Info

Size	SF per carton	PC per carton	BX per pallet
12"x24" R	18.94	10	32
24"x24" R	19.05	5	30
24"x48" R	22.93	3	27